



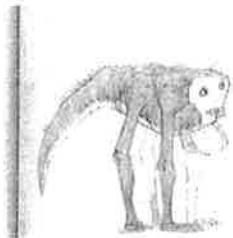
*** PART 1 ***

Choose Your Own Adaptation

- ### HEAD PARTS
- **EYES**
 - 1 - Two on stalks
 - 2 - Two in front of head
 - 3 - Two, 1 on each side
 - 4 - Two very large
 - 5 - None
 - 6 - Two compound eyes
 - **MOUTH/HEAD**
 - 1 - Big head
 - 2 - Small head
 - 3 - Head with one horn
 - 4 - Head with tusks
 - 5 - Head with two horns
 - 6 - Head with a beak
 - **EARS**
 - 1 - One on top of head
 - 2 - Two, 1 on each side
 - 3 - None
 - 4 - Antennae (choose #)
 - 5 - Four large
 - 6 - Sonar only
 - **NOSE**
 - 1 - Long and thin
 - 2 - Short and thin
 - 3 - Long and thin, pointy end
 - 4 - Long and thin, flat end
 - 5 - None
 - 6 - Wide and flat

- **BY FOLLOWING THESE SIMPLE STEPS, YOU WILL BE ABLE TO CREATE YOUR VERY OWN UNIQUE ORGANISM.**
 - **A SIMPLE ROLL OF THE DIE, AND YOU ARE ON YOUR WAY!**
- 


- ### BODY PARTS
- **BODY SHAPE**
 - 1 - Long and thin
 - 2 - Short and thin
 - 3 - Long and stocky
 - 4 - Short and stocky
 - 5 - Long with a hump
 - 6 - Short with a hump
 - **FINGERS/TOES**
 - 1 - Webbed
 - 2 - 2 pincers/claws
 - 3 - 3 fingers/toes
 - 4 - 4 pads
 - 5 - 5 fingers/toes
 - 6 - None
 - **ARMS/LEGS**
 - 1 - None
 - 2 - Fins/flippers
 - 3 - 8 arms or legs
 - 4 - 4 arms or legs
 - 5 - 2 wings, choice of legs
 - 6 - 4 wings, choice of legs
 - **HAIR/FUR**
 - 1 - Long and thick
 - 2 - Short and thick
 - 3 - Feathers
 - 4 - No hair, only skin
 - 5 - Scales
 - 6 - Shell

- **BE SURE TO CIRCLE OR HIGHLIGHT YOUR TRAITS AFTER EACH ROLL OF THE DIE.**
 - **YOU WILL DRAW YOUR ORGANISM AFTER ALL THE TRAITS HAVE BEEN CHOSEN.**
- 

- ### COLORATION AND DIET
- **COLOR**
 - 1 - Blue
 - 2 - Orange
 - 3 - Yellow
 - 4 - Green
 - 5 - Black
 - 6 - Brown (choose shade)
 - **PATTERN**
 - 1 - Stripes (choose color)
 - 2 - Spots (choose color)
 - 3 - Solid (no pattern)
 - 4 - Solid (no pattern)
 - 5 - Camo (your choice)
 - 6 - Two colors (Roll die again for second color)
 - **DIET**
 - 1 - Herbivore (plants only)
 - 2 - Carnivore (land animals only)
 - 3 - Omnivore (everything)
 - 4 - Carnivore (seafood only)
 - 5 - Carnivore (insects only)
 - 6 - Scavenger (dead things)
- MAKE SURE YOUR TEETH MATCH YOUR DIET..... THINK ABOUT IT!**

YOUR NAME: _____

DRAW YOUR ORGANISM

WHERE YOU LIVE

Welcome to the island of Pantheronia. This medium-sized island lies more than 500 miles off the coast of a large continent. Your island paradise gets lots of rain and has high humidity. There is a lot of vegetation, including many varieties of plants and flowers, and a wide assortment of tall and short trees. Temperatures can reach 100°F in the summer, and never fall below 40°F in the winter. Fresh water streams and ponds are abundant. Pantheronia has an abundant assortment of organisms of all types so the food supply is not generally a problem.

Life is good in Pantheronia... but things are about to change.



Are you well adapted to survive in your new environment? Will your species be able to carry on?



Your fate lies in the roll of the die!

**Roll to determine which "Event" occurs
(circle it on the slides below)**

Monsoon!

If you roll a 1 = Heavy rains have been falling for several weeks. As a result, most of the streams and rivers have flooded most of the land.



Drought!

If you roll a 4 = In the last few years, the amount of rainfall has been steadily decreasing. This has had a large impact on the amount and types of vegetation available. It has also lowered the water level in the rivers and streams. This has increased fighting for water between all inhabitants of the island.



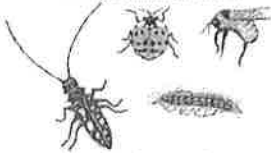
Invasive Species!

If you roll a 2 = A predator species has recently been introduced to the island. In its native habitat (original home), brightly colored organisms were poisonous so they avoid eating organisms with bright colors. They are excellent hunters.

Invasive species can be hazardous to public lands and waters! Prevent their introduction and spread by cleaning your vehicles, machinery, and boats.

Alien Invaders

Invasive Species Introduced into the U.S.



Hunting/Poaching!

If you roll a 5 = Human explorers recently visited the island and greatly admired your beautiful, bright colors. They brought their discovery back to the mainland, and now you are a greatly prized trophy. Hunting parties regularly visit the island to bring you back to the mainland to sell.



Pesticides!

If you roll a 3 = Humans have recently inhabited the island and want to develop it into a popular vacation destination. Unfortunately, they consider your species to be a pest and spray chemicals to repel you. This chemical most strongly affects organisms of your species with exposed skin.



Disease!



If you roll a 6 = A new disease has recently affected much of the land vegetation on the island. This causes a negative effect throughout the food web. Nothing on land has been left untouched by this disease.



UNFORTUNATELY, THERE CAN BE ONLY ONE SURVIVOR FROM YOUR GROUP.

- List some traits your organism has that you think will help it survive in the new environment:
 -
 -
 -
 -
 -
 -
- Share your list and decide which organism gets to stay on the island!

ANSWER THE FOLLOWING QUESTIONS

1. What traits did **the surviving organism** have?
 -
 -
 -
 -
2. Explain why these traits would be considered ADAPTATIONS?
(How would they help the organism survive in its environment?)

* Why is "Event" happened? x your group? *